

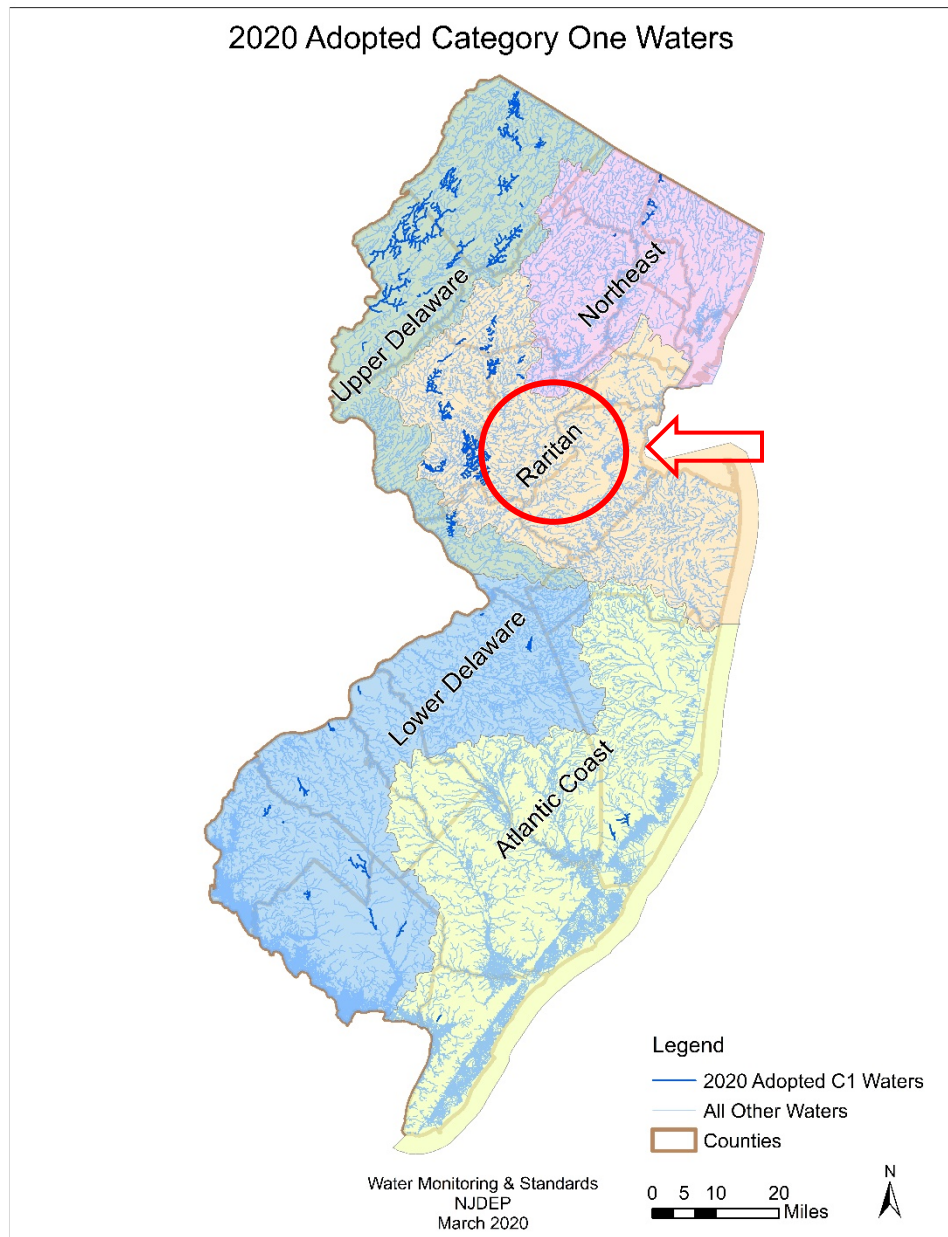
2020 Adopted Category One Waters

Instructions for Using Maps

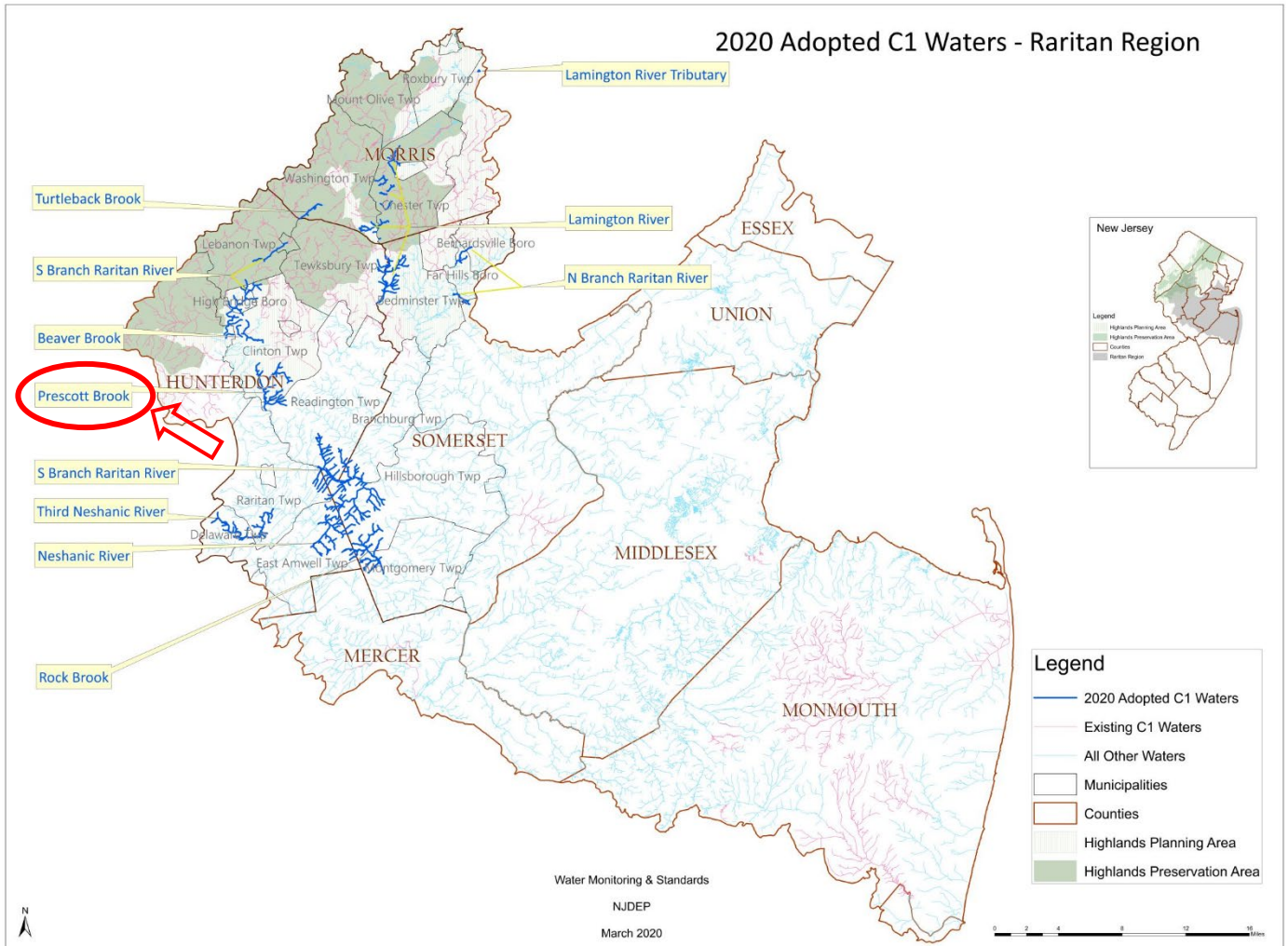
The map showing the streams adopted as Category One is layered and interactive. The following instructions can be used to get a closer look at any of the adopted Category One stream segments in the five water regions: Northeast, Upper Delaware, Raritan, Lower Delaware and Atlantic Coast.

Use an internet browser such as **Internet Explorer** and/or **Chrome** to view the maps of the adopted Category One stream segments at <https://www.nj.gov/dep/workgroups/swqs.html>.

1. Click on any water region displayed on the New Jersey state map to open any one of the five water regions: Northeast, Upper Delaware, Raritan, Lower Delaware and Atlantic Coast.



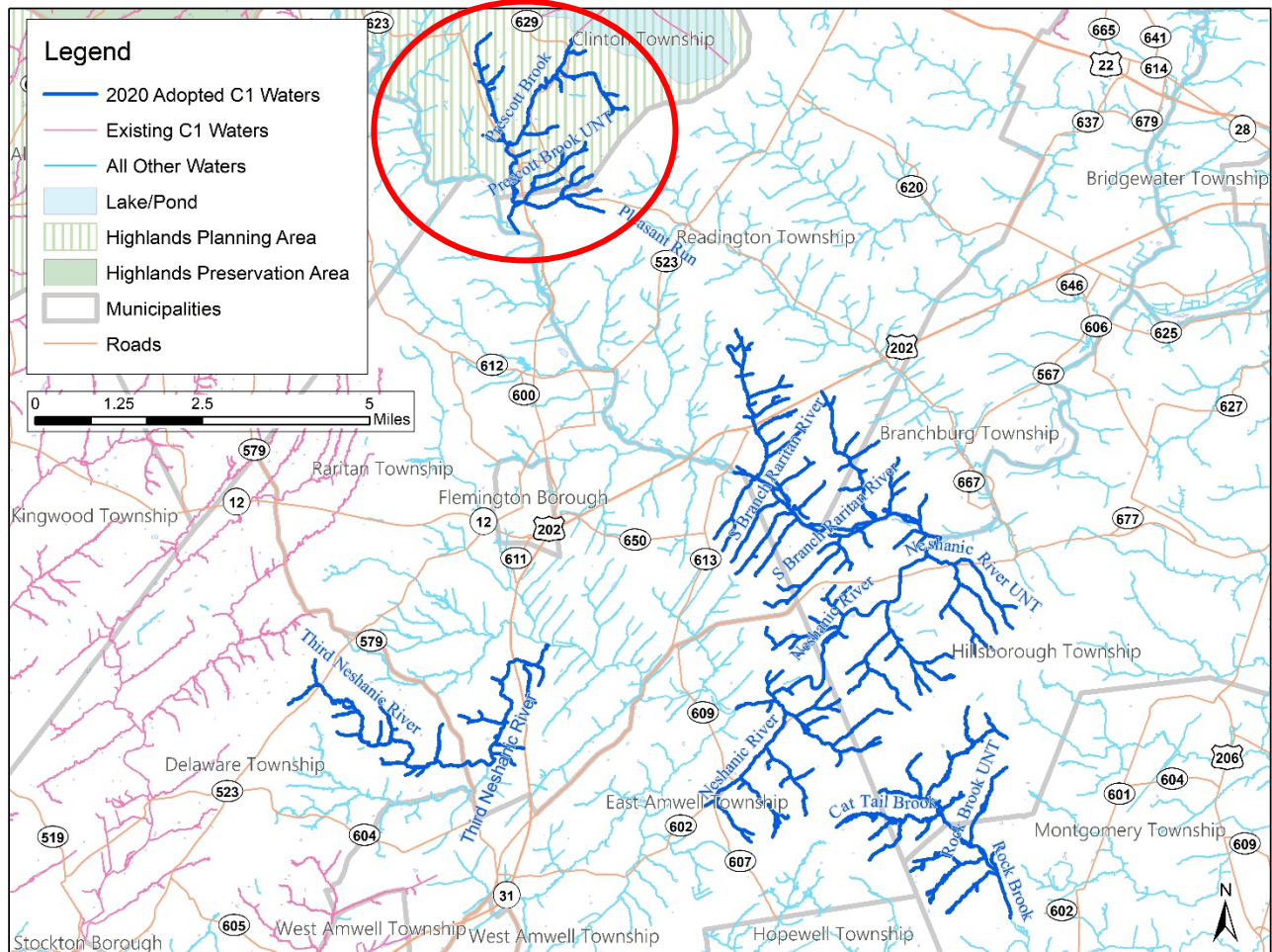
- Click on any label (e.g. Prescott Brook) on the map of a water region to open a map which provides a closer view of the stream segments adopted for Category One.



3. A PDF map providing a closer look of the adopted stream segments of the Prescott Brook will open.



2020 Adopted Category One Waters - Prescott Brook, South Branch Raritan River, Neshanic Rivers, and Rock Brook



Water Monitoring & Standards
NJDEP
March 2020